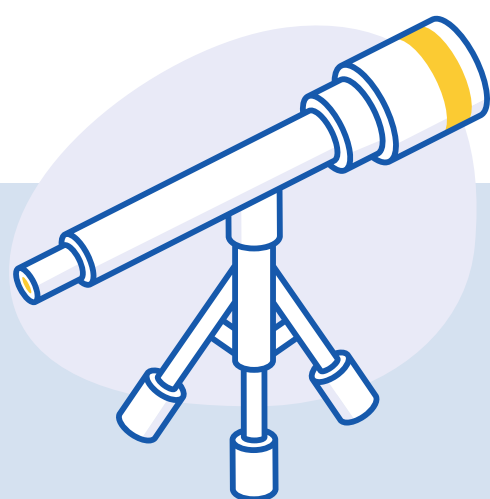


Achieving Gatsby Benchmarks

The National Schools' Observatory resources support schools to meet the eight Gatsby Benchmarks of Good Career Guidance.

Source • THE GATSBY CHARITABLE FOUNDATION



1. A stable careers programme

The National Schools Observatory runs an annual programme of astronomy, outreach and careers events.

schoolsobservatory.org

2. Learning from career and labour market information

Pupils can use our website to research a huge range of career options available to those who are interested in science and space.

schoolsobservatory.org/careers

3. Addressing the needs of each pupil

Pupils can get in touch with the National Schools' Observatory Team via our web forums.

Teachers can create accounts for students on the NSO website



4. Linking curriculum learning to careers

Our ever expanding range of curriculum – linked activities can help you bring careers into lessons and STEM Clubs.

schoolsobservatory.org/discover

5. Encounters with employers and employees

Schools can take advantage of the Astrophysics Research Institute Outreach offer.

www.astro.ljmu.ac.uk/outreach



6. Experiences of workplaces

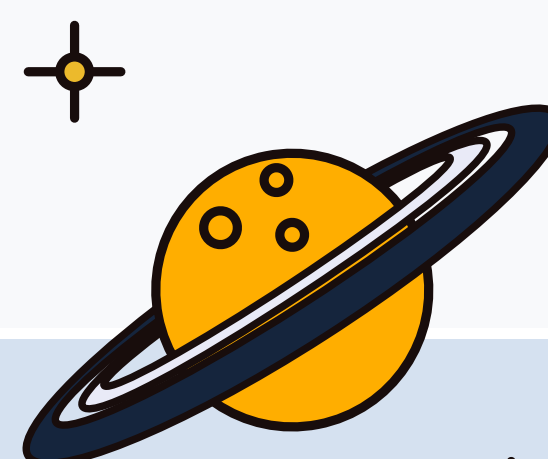
We offer an annual work experience week for 16 – 18 year olds in our Astrophysics Research Institute.

[subscribe to our newsletter to receive updates](#)

7. Encounters with further and higher education

The LJMU Outreach Team offer a range of inspiring activities.

Search 'Outreach' at ljmu.ac.uk



8. Personal guidance

Careers Leaders can register for NSO Teacher account, subscribe to our newsletters and create accounts for students.

schoolsobservatory.org/register



Find all this and more by registering for FREE at
schoolsobservatory.org



Proud to be part of